

# Online Learning Lessons for 6<sup>th</sup> Grade

**Directions:** Please complete the following work below for each subject. This work will count toward your final grade and must be complete to get credit for attendance.

Student Name \_\_\_\_\_ FOR **4/17/2020**

## ELA

**Visionary Vocab:** Pick 4 of the Vocab Terms and 4 of the slides/activities. Delete the slides that you haven't chosen and answer the 4 slides you have chosen with your chosen words (1 word per 1 slide), then submit.

**Parent Initials:** \_\_\_\_\_

## Math

**All Math Classes:** Watch the video lesson online or view the notes page on Polygons in the Coordinate Plane. Then complete the Quizizz: Polygons on Coordinate Plane. Go to joinmyquiz.com and put in the code 569701. Use your first name and last initial. (Paper copies attached)

**Parent Initials:** \_\_\_\_\_

## Science

**Moon Phases Assessment**

**Parent Initials:** \_\_\_\_\_

## History/Social Studies

**None**

**Parent Initials:** \_\_\_\_\_

**Parent Signature:** \_\_\_\_\_

If you have questions, please email your teacher.

Thank you!

Ms. Cook      jcook@mcusd1.net  
Ms. Couch      scouch@mcusd1.net  
Mr. Drenth      rdrenth@mcusd1.net  
Ms. McDermott      smcdermott@mcusd1.net

**Teacher Hours:**  
**9:00 am - 11:30 am**  
**12:30 pm - 2:30 pm**



# Moon Phases

Name: \_\_\_\_\_

Date: \_\_\_\_\_

## Vocabulary Matching:

Match the word to its definition!

- |                   |  |
|-------------------|--|
| 1. waxing _____   | a. phases where less than half of the moon is lit  |
| 2. crescent _____ | b. phases where half of the moon is lit  |
| 3. gibbous _____  | c. group of phases where the light is increasing and the light is on the right side of the moon. |
| 4. quarter _____  | d. phases where more than half of the moon is lit  |
| 5. waning _____   | e. group of phases where the light is decreasing and the light is on the left side of the moon.  |

## Label the Phases!

Label each phase of the moon by using the phases in the box.

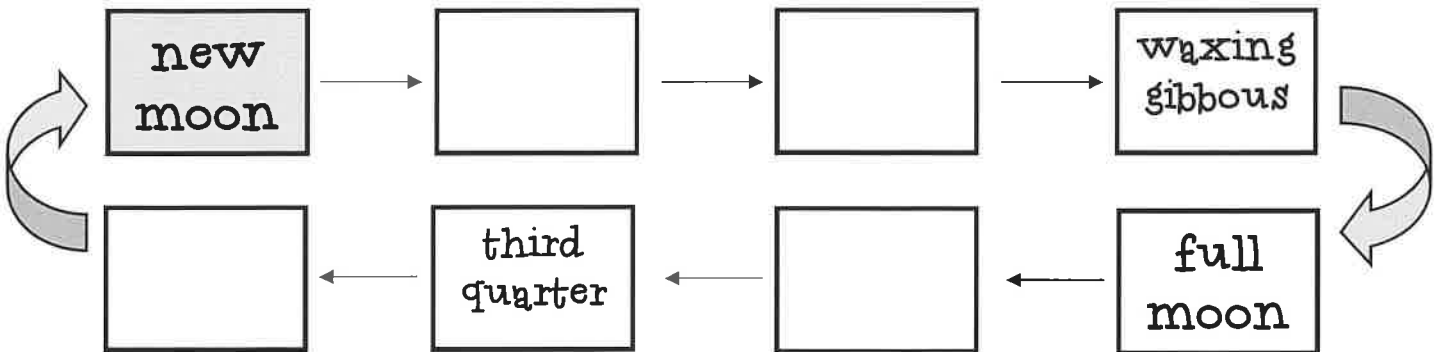
Note: Some of the phases will not be used!

new moon	full moon	first quarter	third quarter
waning gibbous	waxing gibbous	waning crescent	waxing crescent

6.		7.		8.		9.		10.	
_____									

## Order the Phases

Using the phases in the box above, fill in the blanks below to put the phases in the correct order! (# 11 - 14 ) Follow the arrows!





# Vocabulary Menu

**Directions:** Choose 4 interesting or new vocabulary words to work on for the day. Choose a **different activity** from the menu to complete for each word on a new sheet of paper. Add color and detail to each completed section so as to distinguish it from the neighboring word.

**Required:** Each vocabulary word is written in color and spelled correctly. The part of speech is correctly identified. A dictionary definition is included. Each activity demonstrates a clear understanding of the vocabulary word.

**Detail Detective:** Write a detailed "explaining" sentence that makes use of the vocabulary word in such a context that someone could guess the word's meaning. An *explaining* sentence has a specific action verb, not a *telling* verb.

*"The young cop's skin was ashen and pale after he left the scene of the gruesome triple homicide."*

**Elaborate Acrostic:** Write an acrostic poem or acrostic sentence based on all the vocabulary word's letters; the poem/sentence must have something to do with the word's meaning.

Loathe:  
*"Leslie, our angry terrier, hates everything"*

**"Figure" it out:** Create a stick figure drawing that represents the vocabulary word along with a dialogue bubble or caption about the word; the bubble or caption must correctly use the word.

*She crept stealthily through the yard, careful not to step on a twig or dried leaf, as she quietly approached the house.*

**Haiku Poem:** Write a haiku poem that contains and explains the vocabulary word. Haiku poems contain three lines. The first line has five syllables, the second line has seven syllable, and the third line has five syllables.

*Amicable is (5 syllables)  
Smiling pleasantly at the (7 syllables)  
Lonely little girl. (5 syllables)*

**Alliteration Sentence:** Write a sentence for the vocabulary word that uses at least four examples of alliteration; the sentence must have something to do with the word's meaning.

Gilded:  
*With gilded sword sparkling gold in the sunlight, he attacked the gluttonous lion before it gorged on the beast.*

**It's All Relative:** Research three different-but-related words. This does not mean adding a prefix or suffix to the word, like *un-* or *-ing* or *-s*. A different-but-related word means the vocabulary word shares a common root with three other words. Write the definition for each related word to show the relationship.

Biography:  
*Biology (the study of life), Biopsy (to remove tissue from a living body), Biogenesis (living organisms develop from other living organisms)*

**Personified Sentence:** Write a personified description of a character whose surname is the vocabulary word. The description must connect the word's meaning to the "person's" personality or job.

*Persnickety stuck her pert little nose in the air as she glared at the small and dirty child. "I don't play with filthy, poor children!" she said in a huff and stalked off in her Jimmy Choo ballet slippers clutching her pink Prada purse.*

**Metaphor Poem:** Write at least a two-stanza poem that uses your vocabulary word as a metaphor and then further explains how the vocabulary word is that metaphor. If my vocabulary word is capitulate, for example, the you could write:

*"Capitulate is the shrug of the shoulders your father does when giving in to where mom wants to go to dinner. Capitulate is the white flag tentatively waving in the breeze above the battered and beaten army."*

**Simile Poem:** Write at least a two-stanza poem that uses your vocabulary word as a simile. Add more lines to further explain how the vocabulary word is that simile.

*"Avarice is like a spoiled child Always demanding, grabbing, and hoarding All of mom's freshly baked cookies. Avarice is like a vacuum, It eventually sucks All the fun out of life and leaves you surrounded by the filth of yesterday's tedious efforts."*

**"Take Two" Rhyming Couplet:** Write a rhyming couplet that uses and explains the vocabulary word. A couplet is two consecutive lines that have end rhymes.

*She looked at me dazed and confused  
I did not laugh as I wasn't amused  
Why didn't she understand me?*

**Same or Different?:** Find two synonyms and two antonyms for the vocabulary word. Write the definition for each synonym or antonym.

Melancholy:  
Synonym                      Antonym  
*somber (depressing)              cheerful (happy)*  
*sorrowful (full of sadness)       joyful (delighted)*

**A Picture is Worth...:** Choose a magazine cut-out, sticker, clip art, etc. that represents the vocabulary word. Write a detailed explanation of why / how the image relates to or represents the vocabulary word.



# Vocab Terms

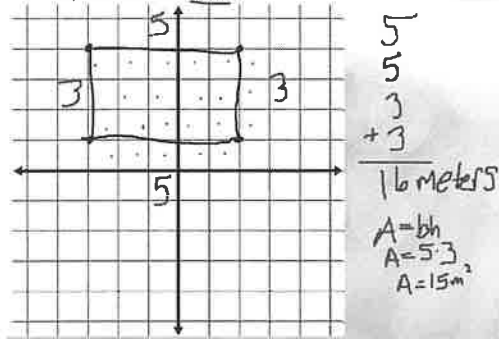
- Eclipse
- Parody
- Awe
- Eerie
- Adapt
- Quest
- Solar
- Swarm

## Polygons in the Coordinate Plane

Page 1

### EXAMPLE Drawing Polygons

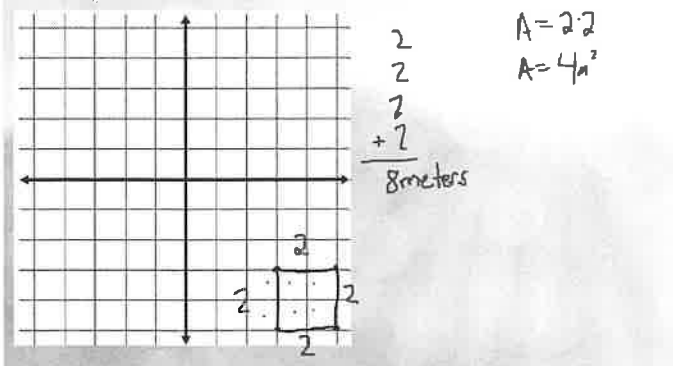
- 2 **Landscape Designer** A landscape designer uses a rectangle that has coordinates  $(-3, 4)$ ,  $(2, 4)$ ,  $(2, 1)$ , and  $(-3, 1)$  to represent a shed in a yard. What is the perimeter of the shed? Each unit of length represents one meter.



Page 2

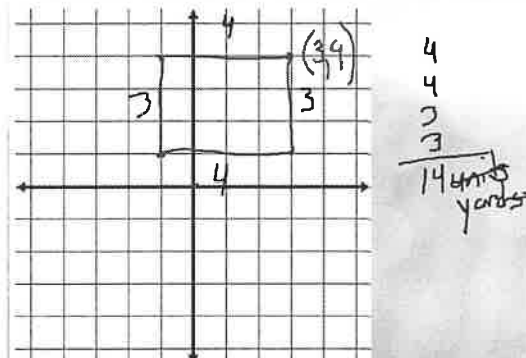
### Quick Check

2. The designer uses a rectangle with coordinates  $(3, -3)$ ,  $(5, -3)$ ,  $(5, -5)$  and  $(3, -5)$  to represent a flower garden. What is the perimeter of the flower garden? Each unit of length represents one meter.



Page 3

25. **Guided Problem Solving** Paulo made a diagram of a rectangular vegetable garden he wants to plant on a coordinate plane. His brother accidentally tore off a corner of the paper, and only the points  $(-1, 4)$ ,  $(3, 1)$ , and  $(-1, 1)$  showed. What will be the perimeter of the garden? Each unit of length represents one yard.



Page 4





## Polygons on Coordinate Plane

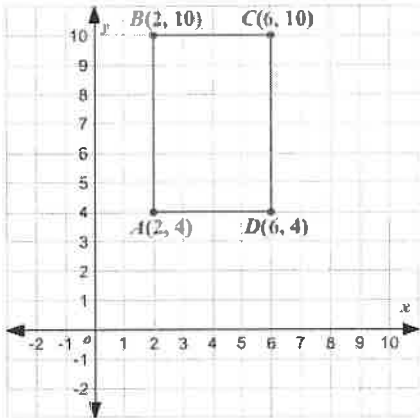
16 Questions

NAME : \_\_\_\_\_

CLASS : \_\_\_\_\_

DATE : \_\_\_\_\_

1.



What is the perimeter of the shape?

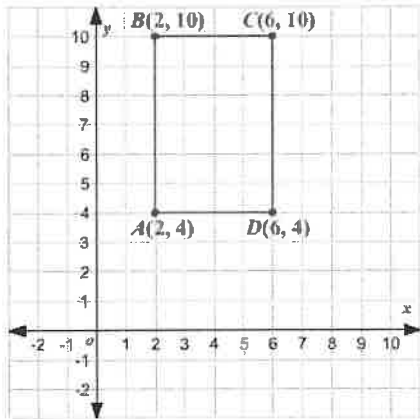
a) 20 units

b) 12 units squared

c) 22 units

d) 32 units squared

2.



What is the area of the shape?

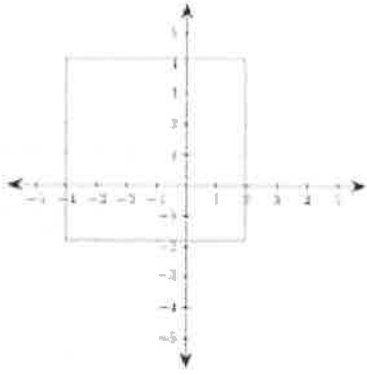
a) 35 units squared

b) 24 units squared

c) not enough information

d) 22 units squared

3.



What is the area of the figure?

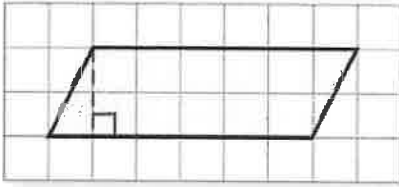
a) 12 square units

b) 24 square units

c) 18 square units

d) 36 square units

4.



Find the area of the parallelogram.

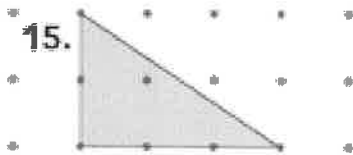
a) 12 units<sup>2</sup>

b) 10 units<sup>2</sup>

c) 13 units<sup>2</sup>

d) 6 units

5.



What is the area of the triangle?

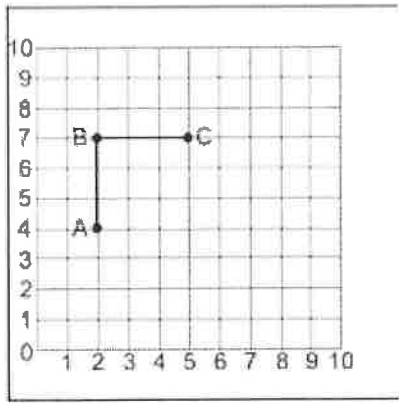
a) 2.5 square units

b) 3 square units

c) 3.5 square units

d) 4 square units

6.



The drawing shows points  $A$ ,  $B$ , and  $C$ . At what location would you add point  $D$  to create a square?

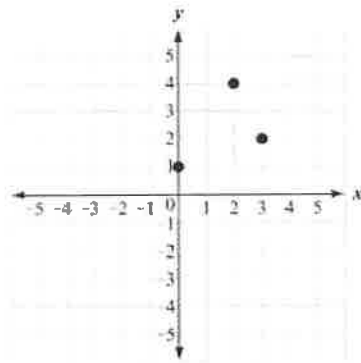
a) (2,1)

b) (4,5)

c) (5,4)

d) (5,10)

7.



Norman drew three points on a coordinate grid, as shown. If Norman draws a fourth point to form a parallelogram, which point could not be Norman's point?

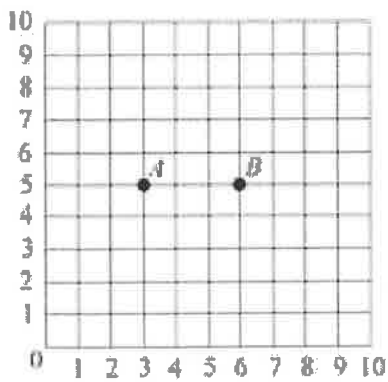
a) (5,5)

b) (1,-1)

c) (-1,3)

d) (2,-2)

8.



Jim plotted points  $A$  and  $B$  on the coordinate grid. He wants to add a point  $C$  to create a right triangle. Which of the following coordinates would not create a right triangle?

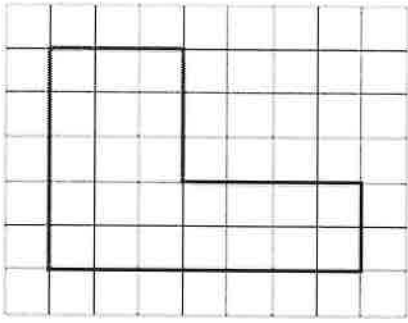
a) (5,8)

b) (6,8)

c) (3,2)

d) (3,7)

9.



perimeter?

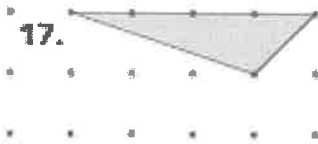
a) 30 units

b) 32 units

c) 24 units

d) 36 units

10.



What is the area of the triangle below?

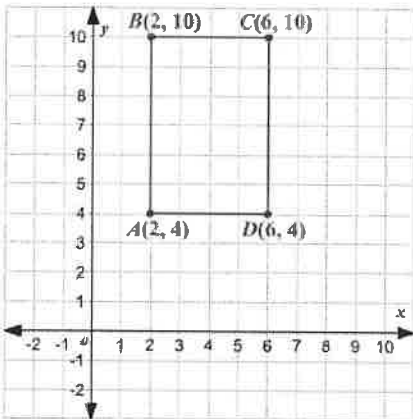
a) 2 square units

b) 2.5 square units

c) 3 square units

d) 3.5 square units

11.



What is the area of the shape?

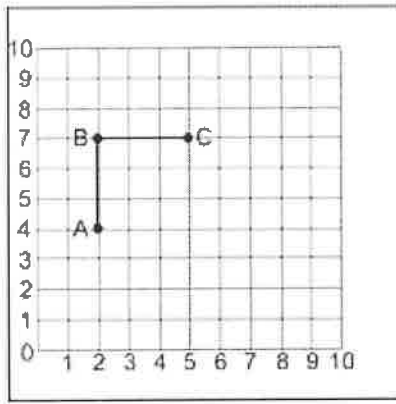
a) 35 units squared

b) 24 units squared

c) not enough information

d) 22 units squared

12.



The drawing shows points  $A$ ,  $B$ , and  $C$ . At what location would you add point  $D$  to create a square?

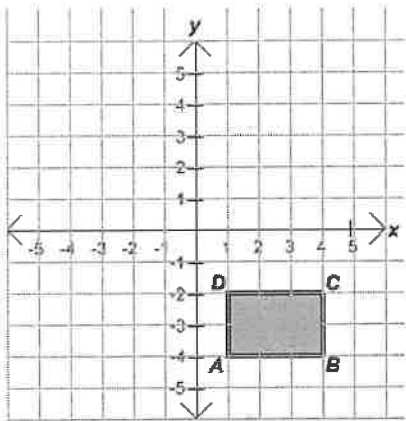
a) (2, 1)

b) (4, 5)

c) (5, 4)

d) (5, 10)

13.



What is the area of the rectangle?

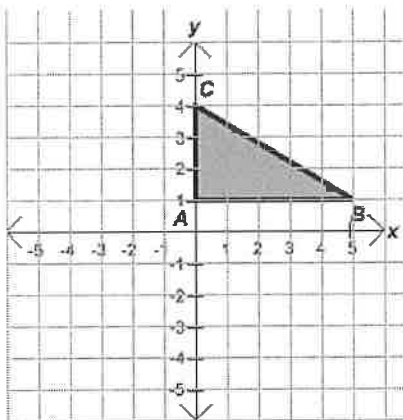
a) 12 units<sup>2</sup>

b) 10 units<sup>2</sup>

c) 5 units<sup>2</sup>

d) 6 units<sup>2</sup>

14.



What is the area of this figure?

a) 7 units<sup>2</sup>

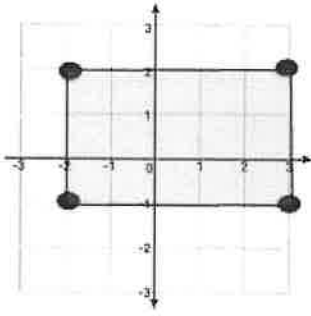
b) 15 units<sup>2</sup>

c) 7 1/2 units<sup>2</sup>

d) 15 1/2 units<sup>2</sup>

15.

The rectangle below has coordinates  $(3, 2)$ ,  $(-2, 2)$ ,  $(-2, -1)$ ,  $(3, -1)$



The rectangle shown has coordinates  $(3, 2)$ ,  $(-2, 2)$ ,  $(-2, -1)$ ,  $(3, -1)$  What is the length of the longest side of the rectangle?

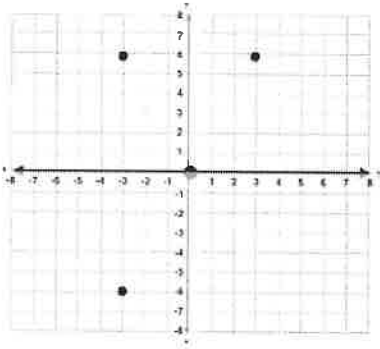
a) 4 units

b) 5 units

c) 6 units

d) 8 units

16.



Which of the coordinates given could be the fourth point used to form a rectangle?

a)  $(3, -6)$

b)  $(-3, -6)$

c)  $(-6, 3)$

d)  $(4, -6)$